



# Company Profile

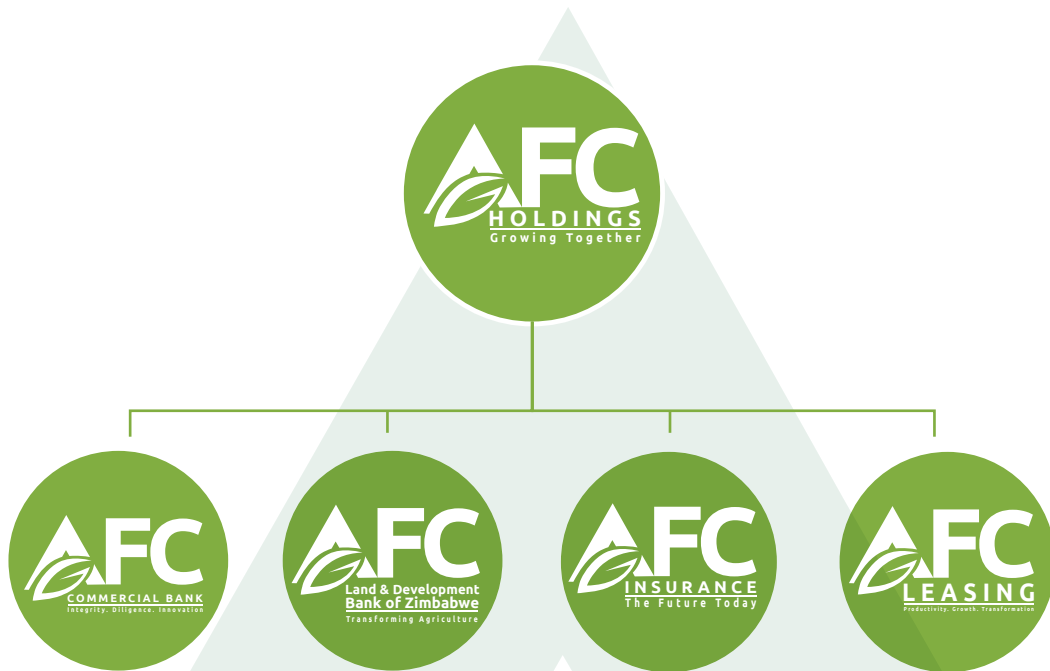


A subsidiary of AFC Holdings



## Background

The AFC Leasing Company of Zimbabwe was launched by His Excellency, the President of the Republic of Zimbabwe, Dr. E D Mnangagwa on 30 April 2021 as part of the AFC Holdings Group housing four subsidiaries, namely:



The AFC Leasing Company of Zimbabwe was officially registered in November 2020 as Agricultural Leasing Company, with the primary mandate to drive access to mechanisation equipment throughout the country.

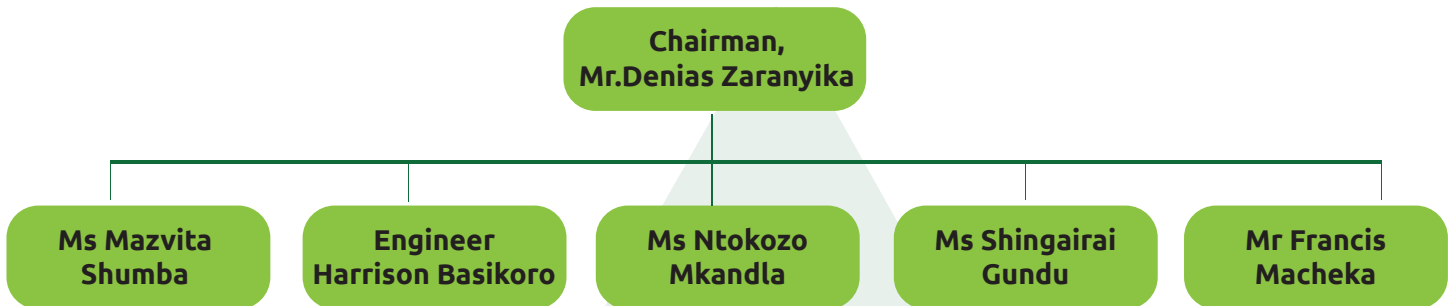
The Leasing Company has a wide reach in all the 10 provinces with equipment strategically located at Clusters Centres for the convenience of the farmer.



# Governance Structures

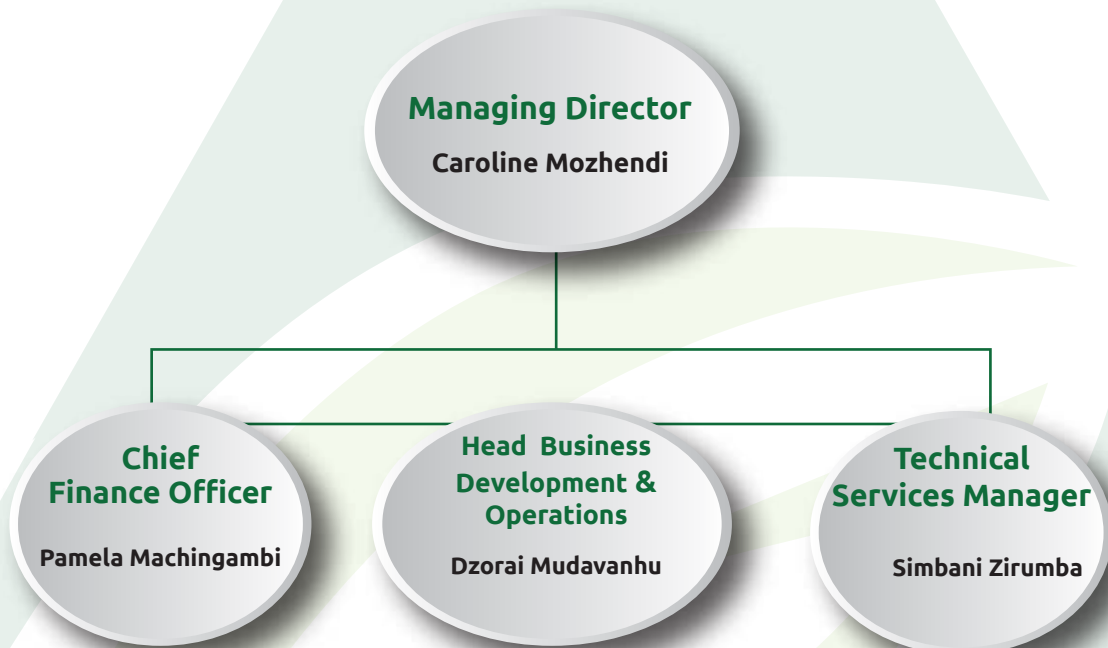
## Board

AFC Leasing Company is directed by the board, which was appointed by the Minister of Lands, Agriculture, Water, Fisheries and Rural Development. The Board of Directors is under the leadership of the Chairman, Mr. Denias Zaranyika.



## Management

The Executive Management team is under the leadership of a Managing Director under which there are three functional heads of departments i.e:





# Our Mandate; Vision & Mission



## Mandate:

To provide agricultural mechanization services to all categories of farmers from small scale, communal to large scale commercial farmers.



## Vision:

To be the market leader in the provision of agriculture equipment hiring and leasing services.



## Mission:

To provide agricultural mechanization solutions to all farmers in Zimbabwe.



Integrity

Initiative

Innovative

Implement



# Our Capacity Statement

## Tractors

600+

- 80Hp
- 100Hp
- 130Hp
- 150Hp
- 220Hp



## Combine Harvesters

56+

- Belarus Palesse S820
- Belarus Gomselmash
- JD C120



## Ploughs

157+



## Chisel Ploughs

12+



## Rippers

8+



## Boom Sprayers

12+





# Our Capacity Statement

## Planters

130+



## Disc Harrows

67+



## Bailers

10+



## Grass Cutters

10+



## Shellers

5+



## Lowbed Trucks

4+



# Our Services



## Land Preparation

Ripping  
Ploughing  
Discing  
Chisel ploughing



## Planting



## Harvesting

Soya bean  
Maize  
Wheat  
Barley



## Crop care

Boom Spraying  
Fertiliser spreading  
Lime/ Vicon spreading



## Grass Cutting & Bailing



## Transport & Logistics



## Equipment Services & Maintenance



## Tractor Only Services



## Tractor Sales



# Cluster Centres

AFC Leasing Company has strategically positioned its equipment at various Cluster Centres distributed in the country's provinces. This allows the farmers to have quick access to equipment thus optimizing efficiencies.

## CLUSTER CENTERS DISTRIBUTION

### MASHONALAND WEST

GMB Karoi  
GMB Mt. Hampden  
GMB Kadoma  
GMB Lions Den  
GMB Chinhoyi  
GMB Chegutu  
GMB Banket

### MASHONALAND CENTRAL

GMB Bindura  
GMB Glendale  
GMB Mvurwi  
GMB Concession  
GMB Matepatapa

### MASVINGO

AFC Gutu Branch  
GMB Masvingo  
Mwenezana  
Roy Shops  
Triangle – Hippo Valley

### BULAWAYO

AFC Inala Branch

### MASHONALAND EAST

Chabwino  
GMB Macheke  
GMB Marondera  
AFC Marondera

### MANICALAND

AFC Mutare Branch  
GMB Middle Sabi  
GMB Mutasa Resettlement  
AFC Rusape Branch

### MIDLANDS

GMB Kwekwe  
AFC Gweru Branch

### MATEBELELAND NORTH

AFC Lupane Branch

### MATEBELELAND SOUTH

Antlope Irrigation Scheme

### HARARE

Mt Hampden

## Our Farmer Segments

- Communal farmers
- A1 and A2 farmers
- Irrigation schemes
- Resettled farmers
- Commercial/ Corporate farmers
- Contractors & Agro-processors





#Simbi dzebasa  
#Insimbi zomsebenzi

*Mechanization*  
services for *all*  
farmers!



### Contact Our Business Development Team

Simbarashe Kandengwa	0719544303	skandengwa@afcholdings.co.zw
Kefasi Murira	0774031670	kmurira@afcholdings.co.zw
Kuvimba Mderede	0772721449	kmderede@afcholdings.co.zw

**10th Floor**  
**Hurudza House**  
**14 – 16 Nelson Mandela Avenue**  
**P.O. Box 369**  
**Harare**